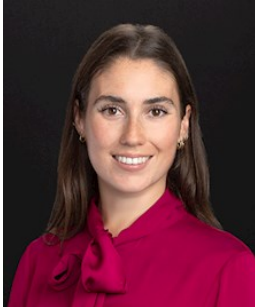


Ellen Dewhurst

Associate



edewhurst@cooley.com

+44 (0) 20 7556 4294

London

Emerging Companies

Venture Capital

Mergers and Acquisitions

Life Sciences and Healthcare

Ellen is an associate in the emerging companies and venture capital team in London.

She specializes in advising early stage life sciences and technology companies and their investors in all stages of the company's life cycle, including equity financings (from seed round through to exit), as well as more general corporate matters and corporate governance.

Ellen also has experience in mergers and acquisitions, private equity and corporate re-organisations.

Before joining Cooley, Ellen was an associate in the corporate team at Hogan Lovells in London. Ellen studied Human Genetics at UCL, where she completed a masters, and honed her passion and enthusiasm for developments in the field of life sciences.

Education

BPP University LPC, Distinction

BPP University Graduate Diploma in Law , Distinction

University College London MSci, Human Genetics, 2016

Admissions & Credentials

England and Wales